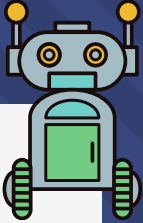




## Lista de componentes incluida en el kit de Electrónica básica e Introducción a Arduino



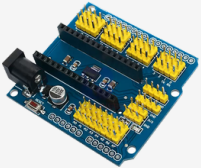
1 Arduino nano genérico

---



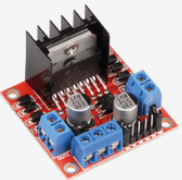
2 Motorreductor con llanta

---



1 Shield sensor expansion

---



1 L298N driver

---



1 sensor ultrasónico hc-sr04

---



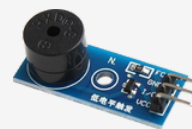
1 Servomotor SG90

---



Jumpers necesarios

---

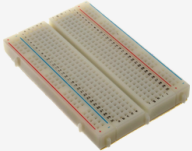
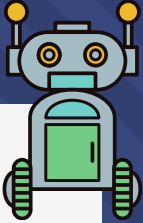


1 módulo zumbador

---



## Lista de componentes incluida en el kit de Electrónica básica e Introducción a Arduino



1 Protoboard 400 puntos

---



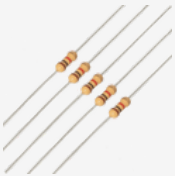
1 Multímetro escolar

---



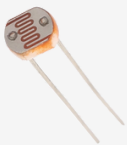
LEDs

---



Resistencias

---



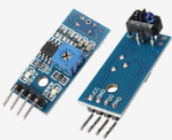
1 fotorresistencia LDR

---



1 kit de baterías de 7.4v

---



1 módulo sensor infrarrojo TCRT5000

---

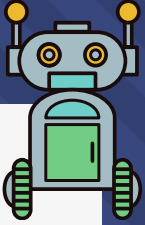


1 botón push

---



## Lista de componentes incluida en el kit de Electrónica básica e Introducción a Arduino



1 Potenciómetro 10k

---



1 Rueda loca

---